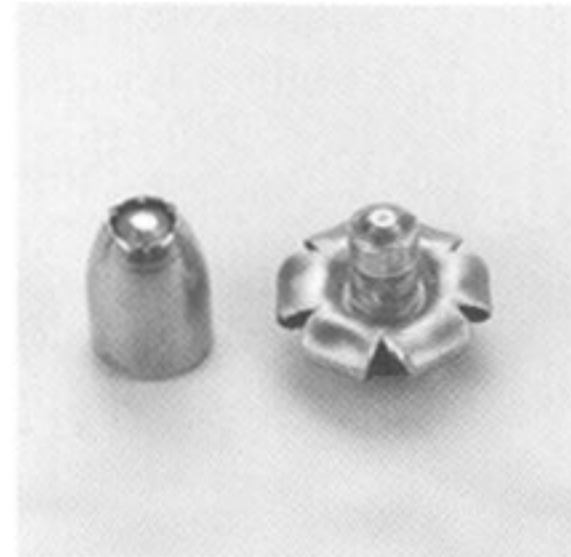
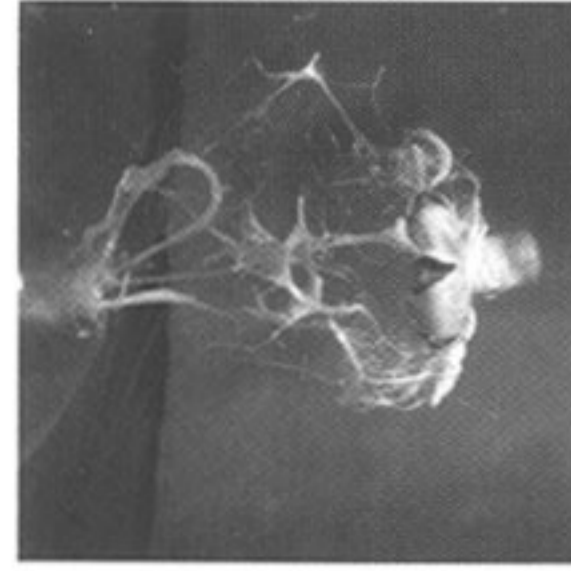


# EMB BULLET

Expansion monoblock bullet designed for police and defence duty, studied and manufactured to perform according to the different targets. On soft targets, such as ballistic gelatine, it releases the maximum possible energy due to its complete deformation which enlarges considerably the bullet diameter. While hitting a light armoured target (such as a car door) its harder central core allows to perforate it performing a sufficient lethal energy.



It is classified as lead less bullet and assembled with Zero pollution primed case preventing the release of heavy metal substances in the air.



## EMB cartridge main features

- Velocity
- High energy release
- Maximum "stopping power"
- Highest possible accuracy
- Absence of barrel leading

### Cartridge features

|                   |  |
|-------------------|--|
| <b>Case:</b>      | Brass FIOCCHI QUALITY  |
| <b>Primer:</b>    | FIOCCHI Boxer small pistol ZP - Mixture with no heavy metals, non corrosive, non erosive |
| <b>Propeller:</b> | Smokeless double or single base  |
| <b>Bullet:</b>    | Mono-block EMB 5 g   |

The cartridge with **EMB** ball is only available in the 9 X 19 calibre

| CALIBRE | PRIMER | BALL |            | Speed     |
|---------|--------|------|------------|-----------|
|         |        | Type | Weight (g) | V10 (m/s) |
| 9 LUGER | ZP     | EMB  | 5          | 455       |